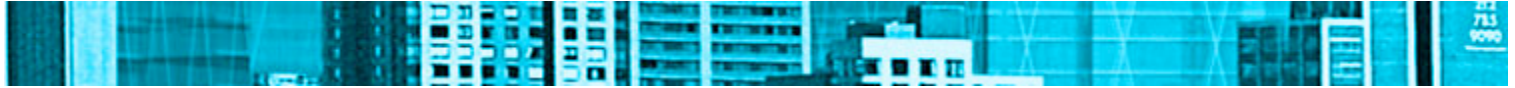


# THE ARCHITECTS NEWSPAPER

NEW YORK ARCHITECTURE AND DESIGN

WWW.ARCHPAPER.COM



[HOME](#) [NEWS](#) [DIARY](#) [CLASSIFIEDS](#) [COMPETITIONS](#) [PAST ISSUES](#) [subscribe](#) [about us](#) [advertising](#) [links](#) [contact](#)

Issue 01\_01.18.2006

## Survey Says

Every time we talk to architects about a project they are finishing up, it seems that the conversation turns to sources: You rave about the possibilities of a new material, or the ingenious solution your structural engineer devised, or the great level of finish on the millwork. We decided to compile these fabricators, consultants, and suppliers and publish them as our first-ever Favorite Sources issue. But not all of you were willing

to play along. When we sent out a note to several thousand of our subscribers, we got some incredulous responses. One reader wrote, "No one in his right mind would divulge a good source. Whose idea was this anyway?" Another chuckled that if she told us the name of her contractor, she'd have to kill us.

Fortunately, many of you were feeling more civic-minded (and less bloody-minded) and recommended the talents and sources that make your lives easier and your projects stronger. One of you even gave us the phone number of a guy whose epoxy floors are like glass. Certain names came up again and again, and they appear in the following pages.

What was most compelling about your responses, however, was the enthusiasm with which many of you spoke about the process of collaboration. Across the board, your favorites seem to be the people and companies who not only do the job as requested, but influence the way you think about your own design process. Throughout the list, you'll find some familiar names, but we hope there will be plenty of new ones as well.

### General Contractor

### Deconstruction

1101 5th Ave, New York, NY 10011-1000



Pizza Bar, Meatpacking District, Ali Tayar, Parallel Design Partnership

"I've been working with **Tacon** for years, most recently on the Pizza Bar in the Meatpacking District. They are unbelievably organized and meticulous, and they have the best site supervisors you can imagine. They'll tell you where there are mistakes, even ones you might never see. They're the opposite of the usual contractor who tells you, 'This is how it is.' Also, I appreciate how they work. They once did a partial renovation for me that was surgically precise. They always left the place spotless."

**Ali Tayar, Parallel Design Partnership**

"Saif Sumaida at **Foundations Group** is one of those rare guys who really understands architecture. He's more like a partner in the process, and helps you figure out how to fabricate, build your ideas."

**Craig Konyk, kOnyk architecture**

"**Vanguard** built the display tongue at the Vitra store for a fraction of the cost that any other firm could have done it for. They really get behind architects who value design, they love it."

**Lindy Roy, ROY Design**



Loft conversion, Meatpacking District, Deborah Berke & Partners Architects

"For clients who demand a certain quality of work—such as the people buying apartments in Richard Meier's Perry Street buildings, where I designed the lobby—how you deal with

440 Lafayette St., New York; 212-473-5610  
[www.deconstructioninc.com](http://www.deconstructioninc.com)

**F. J. Sciamè Construction**  
 80 South St.; 212-232-2200  
[www.fjsciamè.com](http://www.fjsciamè.com)

**FJB Contracting**  
 811 McLean Ave., Yonkers, NY; 914-803-0850  
[www.fjbcontracting.com](http://www.fjbcontracting.com)

**Foundations Group**  
 121 Varick St., New York; 212-924-1724  
[www.foundationsgroup.com](http://www.foundationsgroup.com)

**Fountainhead Construction**  
 1841 Broadway, New York; 212-757-1177

**PM Contracting**  
 40 Exchange Pl., New York; 212-785-8080  
[www.pmcontracting.com](http://www.pmcontracting.com)

**S. DiGiacomo & Son**  
 386 Park Ave. South, New York; 212-704-0750  
[www.sdigiacomocom.com](http://www.sdigiacomocom.com)

**Scordio Construction**  
 560 Fourth Ave., Brooklyn; 718-369-0500  
[www.scordioconstruction.tripod.com](http://www.scordioconstruction.tripod.com)

**Taconic Builders, Inc.**  
 125 Spencer Pl., Mamaroneck, NY;  
 914-698-7456  
[www.taconicbuilders.com](http://www.taconicbuilders.com)

**Tacon**  
 110 Madison Ave., New York; 212-689-7799  
[www.tacon.com](http://www.tacon.com)

**Upgrade Contracting**  
 530 Gardner Ave., Brooklyn; 718-302-1616  
[www.upgradecontracting.com](http://www.upgradecontracting.com)

**Vanguard Construction and Development**  
 307 West 38th St., New York; 212-594-7477  
[www.vanguardcon.com](http://www.vanguardcon.com)

them is as important as the work you deliver. **Taconic** [which also built the loft conversion by Deborah Berke, [above] not only provides flawless work but flawless service. Everyone there is incredibly nice, presentable, professional"

**Ali Tayar, Parallel Design Partnership**

"It might be libelous, but it would be great if you guys put together a list of contractors that people won't work with... Oftentimes though, it just comes down to the specific circumstances of the job and the person you are working with."

**Adam Yarinsky, Architecture Research Office**

## Metal



Brooklyn Museum of Art, Grand Army Plaza, Polshek Partnership

"For detailed metal work, we like **Veyko**. They do fantastic work for all of our projects. They're fabricators but they're also trained architects. They do a lot of building, and they're just really smart. They work with CNC but recognize that assembly and finish have a lot to do with the project, and don't just leave it to machines."

**Paul Lewis, Lewis.Tsurumaki.Lewis**

"If you want to have any special hardware made, no matter how complicated and at whatever scale—from the brackets I designed to the canopy structure of the Brooklyn Museum—**Tri-Pyramid Structures** will find a way to make it. Even if your design isn't totally thought through, they have the expertise to work through it with you."

**Ali Tayar, Parallel Design Partnership Ltd.**

## Fabricators

**Atlas Industries, Inc.**  
750 East State St., Fremont, OH;  
[www.atlas-industries.com](http://www.atlas-industries.com)

**Dynamic Sheet Metal Ltd.**  
206 19th St., Brooklyn; 718-788-1350

**Hillside Sculpture Studios**  
236 Boston Ave., Medford, MA; 781-395-5656

**Kawahara Enterprises**  
344 West 38th St, New York; 212-736-5858

**Kern Rockenfield Inc.**  
178 Classon Ave., Brooklyn; 718-230-7898  
[www.kernrock.com](http://www.kernrock.com)

**Koenig Ironworks**  
223 West 19th St., New York; 212-924-4334  
[www.koenigironworks.com](http://www.koenigironworks.com)

**Tallix Foundry**  
310 Fishkill Ave., Beacon, NY; 845-838-1111  
[www.tallix.com](http://www.tallix.com)

**Todrin Industries**  
600 Somerset Ave., Taunton, MA;  
508-880-2525  
[www.todrin.net](http://www.todrin.net)

**Veyko**  
216 Fairmount Ave., Philadelphia, PA;  
215-928-1349  
[www.veyko.com](http://www.veyko.com)

**Fittings**  
**AE Supply**



American Folk Art Museum, Midtown, Tod Williams Billie Tsien and Associates

"**Tallix Foundry** usually does sculptures, but they're branching out into facades, like the one they did for the Folk Art Museum. They are more willing to change metals than a larger foundry for small projects."

**Billie Tsien, Tod Williams Billie Tsien and Associates**

"The guys at **Todrin Laser**—big gruff guys in blue jumpsuits—are the last ones you'd think would understand the quote-unquote intent behind your architecture but they totally get it. They're amazing [with CNC milling]—they are not the poor man's Zehner, they're a great alternative."

**Andy Bernheimer, Della Valle + Bernheimer Design**



Brooklyn Museum of Art, Grand Army Plaza, Polshek Partnership

"Joe Fratesi at **Atlas Industries** is the kind of fabricator who, when you design a special piece and bring it to him, he sits you down and you start redesigning it. The intent and appearance stay the same, but how you get there changes. He helps you devise the right methodology or technique given the project or budget. They worked on the Issey Miyake

**AF Supply**

22 West 21st St., New York;  
[www.afsupply.com](http://www.afsupply.com)

**B&B Italia**

150 East 58th St., New York; 800-872-1697  
[www.bebitalia.it](http://www.bebitalia.it)

**Boffi SoHo**

31 1/2 Greene St., New York; 212-431-8282  
[www.boffisoHo.com](http://www.boffisoHo.com)

**Bowery Restaurant Supply**

183 Bowery, New York; 212-254-9720  
[www.boweryrestaurantsupply.com](http://www.boweryrestaurantsupply.com)

**Fersa Custom Decorative Hardware Artisans**

Buenos Aires, Argentina; 877-552-3332  
[www.fersa.biz](http://www.fersa.biz)

**Häfele Showroom**

25 East 26th St., New York;  
[www.hafeleamericas.com](http://www.hafeleamericas.com)

**Tri-Pyramid Structures**

59 Power Road, Westford, MA; 978-692-0555  
[www.tripyramid.com](http://www.tripyramid.com)

**Wainlands, Inc.**

453 West 17th St., New York;  
[www.wainlands.com](http://www.wainlands.com) 212-243-7717

**William M. Lowe**

8 Granite Point Pl., Owl?fs Head, ME;  
207-594-9327  
[www.lowe-hardware.com](http://www.lowe-hardware.com)

**Sources**

**Allied Bronze**

25-11 Hunters Point Ave., Long Island City;  
718-361-8822

**Cambridge Architectural Mesh**

105B Goodwill Road, Cambridge, MD;  
866-806-2385  
[www.architecturalmesh.com](http://www.architecturalmesh.com)

**Empire Metal Supply**

175 Commerve Dr., Hauppauge, NY;  
631-231-5000  
[www.amerimelt.com](http://www.amerimelt.com)

**GKD World Wide Weave**

[www.creativeweave.com](http://www.creativeweave.com)

**Johnson Screens**

708 Challenger Way, Forked River, NJ;  
609-693-9434  
[www.johnsonscreens.com](http://www.johnsonscreens.com)

**Peter Mann**

111 First St., Jersey City, NJ;  
[www.mannpeter.com](http://www.mannpeter.com)

**Revere Copper Products, Inc.**

One Revere Park, Rome, NY; 800-448-1776  
[www.reverecopper.com](http://www.reverecopper.com)

boutique with us, and are extremely knowledgeable in many types of fabrication."

**Gordon Kipping, G-tects**



**Dacra showroom, Miami, K/R Architects**

"For a showroom we are finishing in Miami, we used **Cambridge Architectural Mesh's** structural metal screen to reduce light coming in through the glass. Of all the metals and woven metals we looked at, we found theirs to be the best-constructed product. The company has a sense of how architects might actually use their product in buildings, and they are great at working with architects to accommodate specific designs."

**John Keenan, K/R**

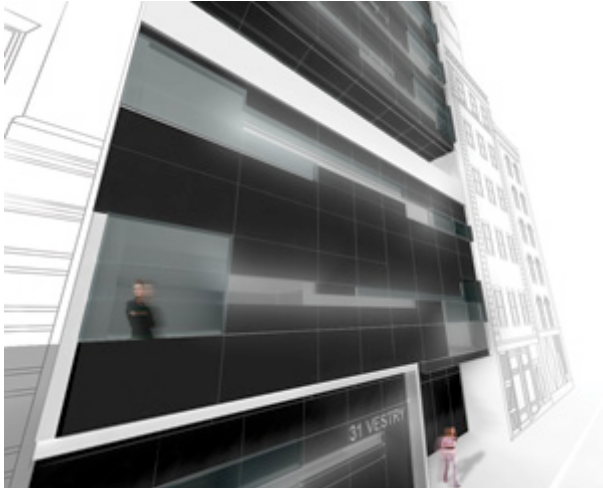


**Juan Valdez Cafe, Midtown, Hariri & Hariri Architects**

"Everyone always asks us about the etched stainless steel facade of the Juan Valdez Cafe. The mesh was woven by a German company, **GKD**, then shipped to **Kern Rockenfield** in Brooklyn. They did a great job applying the artwork [a portrait of Juan Valdez] in their shop and installed the work on site.

**Gisue Hariri, Hariri& Hariri Architects**

## Curtain Wall



31 Vestry Street, Tribeca, Archi-technics

"On the Vestry Building, we wanted to go with something completely non-standard, and work with someone who could rethink how a curtain wall works. UAD specializes in shop windows, so they understood our interest in horizontal mullions. They're interested in doing custom jobs, and they're great engineers."

**Winka Dubbeldam, Archi-technics**

### Israel Berger & Associates

232 Madison Ave., New York; 212-689-5389  
[www.ibany.com](http://www.ibany.com)

### Permasteelisa

123 Day Hill Rd., CT; 860-298-2000  
[www.permasteelisa.com](http://www.permasteelisa.com)

### UAD Group

299 Vandervoort Ave., Brooklyn; 718-599-0350  
[www.uadgroup.com](http://www.uadgroup.com)

### W&W Glass Systems, Inc.

300 Airport Executive Park, Nanuet, NY;  
 800-452-7925  
[www.wglass.com](http://www.wglass.com)

## Wood



American Folk Art Museum, Midtown,  
 Tod Williams Billie Tsien and Associates

"What I like about Hird/Blaker is that they don't say 'No' but they don't just 'Yes' you, either. They are excited about what they do and about what architects do; there's great mutual respect in the relationship."

**Martin Finio, Christoff: Finio Architects**

### CUSTOM FABRICATION

#### Bauerschmidt + Sons

11920 Merrick Blvd., Jamaica, Queens;  
 718-528-3500

#### Bjork-Carle Woodworking

718-349-7471

#### Birdie Miller Designs, Inc.

232 Route 605, Stockton, NJ;  
[www.customcabinetmakers.com](http://www.customcabinetmakers.com)

#### Chris Perry Woodworking, Inc.

55 Washington St., Brooklyn; 718-596-7185

#### Elite Woodworking

4 53rd St., Brooklyn; 718-765-4050

#### Express Furniture

51 West 14th St., New York; 212-242-7500

#### Hird/Blaker Architectural Woodwork

620 East 132nd St., Bronx; 718-665-0500



Whitney Center, Long Island, Weiss/Manfredi Architects

"We're just completing a conference facility for the United Nations [the Whitney Center] which has a complex elliptoid conference room. It is clad with 250 cherry panels that are perforated to improve acoustics. **Midhattan** is a bunch of guys with rough hands who cut and finished the panels. It was an intensely collaborative experience. On one hand, it is a traditional wood fabrication shop, with guys in their 70s who've done this for ever; on the other, they can produce beautiful work with a CNC-milling machine."

**Michael Manfredi, Weiss/Manfredi Architects**



Apartment, Manhattan, kOnyk Architecture

"I never saw such high-end carefulness than in the work **Bjork-Carle** did for an apartment we just finished. He has these French guys trained as artisans; they view it as a profession, like waitering is regarded in France. They know how to do veneers like no one."

**Craig Konyk, kOnyk architecture**

"**Steven Iino** has the soul of George Nakashima with poetry thrown in. You really feel that his furniture [installed at the American Folk Art Museum] will last forever."

**Billie Tsien, Tod Williams Billie Tsien and Associates**

[www.hirdblaker.com](http://www.hirdblaker.com)

**Iino, Inc.**  
973-523-7118

**Midhattan Woodworking**  
3130 Bordentown Ave., Old Bridge, NJ;  
732-727-3020  
[www.midhattan.com](http://www.midhattan.com)

**Milder Office Inc.**  
181 North 11th St., Brooklyn; 718-387-0767  
[www.milderoffice.com](http://www.milderoffice.com)

**S. Donadic Woodworking**  
3634 35th St., Long Island City; 718-388-4042

**Wood Enterprises**  
103 North 3rd St., Brooklyn; 718-387-3842

**ZZZ Carpentry**  
547 West 27th St., New York; 212-239-0403

## SOURCES

**Bacon Veneer**  
244 Fifth Ave., New York; 212-213-5200  
[www.baconveneer.com](http://www.baconveneer.com)

**Bettencourt Green Building Supplies**  
70 North 6th St., Brooklyn; 718-218-6737  
[www.bettencourtwood.com](http://www.bettencourtwood.com)

**Expanko**  
800-345-6202  
[www.expanko.com](http://www.expanko.com)

**Hoboken Floors**  
979 3rd Ave., New York; 212-759-5917  
[www.hobokenfloors.com](http://www.hobokenfloors.com)

"The folks at **Bacon Veneers** were very helpful in the selection of veneers—they were great at making mock-ups, and paid attention to flitches to make sure things align perfectly. Bacon is just great at handholding and guiding you through the process."

**Liz Leber, Beyer Blinder Belle Architects**

"**Express Furniture** is a small firm of two brothers who can make anything we give them. They specialize in really direct my-designer-thinks-he-is-Donald-Judd furniture."

**Annie Coggan, Coggan + Crawford Architects**

## Glass



Prada Aoyama, Tokyo, Herzog & de Meuron

"**CriCursa** is expert at folded double-glazing. We sent them 3-D models instead of drawings for the Vestry Building so everyone had the exact dimensions and offsets. They understand that precision is the key to the project and that there is no room for mistakes. They also made the convex and concave panels for the Herzog & de Meuron Prada store in Tokyo [pictured above]."

**Winka Dubbeldam, Archi-techtonics**



Mind Body New York, Gramercy, Daniel Goldner Architects

"**Rudy Art Glass** is run by craftspeople who exist in a customized world, but they accommodate anything you can imagine. At Mind Body New York, they produced the

### **A& B McKeon Glass**

69 Roff St., Staten Island; 718-727-0980

### **Artecture+**

321 West 44th St., New York; 212-265-8400

[www.artectureplus.com](http://www.artectureplus.com)

### **Bendheim**

122 Hudson St., New York; 800-606-7621

[www.bendheim.com](http://www.bendheim.com)

### **CriCursa**

Barcelona, Spain; +34-93-840-4472

[www.cricursa.com](http://www.cricursa.com)

### **Dlubak Glass**

1600 Saxonburg Rd., Natrona Heights, PA; 724-224-6611

[www.dlubak.com](http://www.dlubak.com)

### **Galaxy Glass & Stone**

277 Fairfield Rd., Fairfield, NJ; 800-378-9042

[www.galaxycustom.com](http://www.galaxycustom.com)

### **Joel Berman Glass**

Merchandise Mart Suite #1173, Chicago, IL; 888-505-4527

[www.jbermanglass.com](http://www.jbermanglass.com)

### **McGrory Glass**

100 Commerce Dr., Aston, PA; 800-220-3749

[www.mcgrory-glass.com](http://www.mcgrory-glass.com)

### **Oldcastle Glass**

2425 Olympia Blvd., Santa Monica, CA; 310-264-4700

[www.oldcastle.com](http://www.oldcastle.com)

### **Pulp Studio, Inc.**

3211 S. La Cienega Blvd., Los Angeles, CA; 310-815-4999

[www.pulpstudio.com](http://www.pulpstudio.com)

### **Rudy Art Glass Studio**

15 East Philadelphia St., York, PA; 717-843-3345

[www.rudyglass.com](http://www.rudyglass.com)

### **Trainor Glass**

Hackensack Ave., Building 9 Unit R, South Kearny, NJ; 973-484-5277

[www.trainorglass.com](http://www.trainorglass.com)

biggest unlaminated panels that anybody can make. They'll always work with you to develop new approaches to the material."

**Daniel Goldner, Daniel Goldner Architects**



Department of Art History and Archaeology Slide Library, Columbia University, Morningside Heights, Marble Fairbanks Architects

"The Slide Library at Columbia has glass panels sandwiched between sheets of MDF to admit light. **Dlubak** laser-cut and polished the glass, which is curved in section. Not very many firms would have done as good a job."

**Scott Marble, Marble Fairbanks Architects**

## Concrete, Masonry, Stone, + Tile

"We liked working with I. M. Pei's concrete consultant **Ronald Hough**. He's a crusty old guy, but he's fantastic. He was really really helpful in working with us to create a specific finish on the exterior of the Dacra showroom in Miami. He is the real go-to guy for concrete."

**John Keenen, K/R Architects**

"Our favorite product of the moment is the recycled glass pavers from **Wausau Tile**. They come in a variety of colors—blues, greens, and browns—and different finishes from rough to smooth. They're sturdy and have sparkle."

**Signe Nielsen, Mathews Nielsen Landscape Architects**



Seattle Art Museum Olympic Sculpture Park, Seattle, Weiss/Manfredi Architects

### Artistic Tile, Inc.

79 5th Ave., New York; 212-727-9331  
[www.artistictile.com](http://www.artistictile.com)

### Best Tile

2241 Central Ave., Schenectady, NY;  
518-344-7000

### Bétons Préfabriqués Du Lac (BPDL)

Alma, Quebec, Canada; 418-668-6161  
[www.bpdl.net](http://www.bpdl.net)

### Bisazza

43 Greene St., New York; 212-334-7130  
[www.bisazzausa.com](http://www.bisazzausa.com)

### Caesarstone

36-16 19th Ave., Astoria; 718-777-9780

### Chelsea Arts Tile and Stone

153 West 27th St., New York; 646-638-0444  
[www.chelseaartstileandstone.com](http://www.chelseaartstileandstone.com)

### Clayton Block

800-662-3044  
[www.claytonco.com](http://www.claytonco.com)

### Con-Force

Edmonton, Canada; 780-447-2666  
[www.con-force.com](http://www.con-force.com)

### Durite

15 Cutter Mill Rd., Great Neck, NY;  
516-334-4533  
[www.durite.net](http://www.durite.net)

### Endicott Clay Products Co.

P.O. Box 17, Fairbury, NE; 402-729-3315

"At the Olympic Sculpture Park in Seattle, we are using 305 precast concrete panels in the retaining walls, but each panel is a different dimension. **Con-Force** developed a form that could be used for all of them, which was great. It's also interesting because you don't normally associate landscape projects with highly sophisticated fabrication technologies."

**Michael Manfredi, Weiss/Manfredi Architects**

"**Stone Source** caters to the architectural community, and can really help you to find the right stone and glass. They've been invaluable to us for over 15 years."

**Antonio D'Onofrio, Handel Architects**

#### **Get Real Surfaces**

37 West 20th St., New York; 212-414-1620  
[www.getrealsurfaces.com](http://www.getrealsurfaces.com)

#### **Hastings Tile & Bath**

150 East 58th St., New York; 212-674-9700

#### **Miller-Druck Specialty Contracting, Inc.**

145 Hudson St., New York; 212-343-3300  
[www.millerdruck.com](http://www.millerdruck.com)

#### **Stone Source**

215 Park Ave. South, New York;  
[www.stonesource.com](http://www.stonesource.com)

#### **Reginald Hough**

845-876-1048 [rhoughfaia@aol.com](mailto:rhoughfaia@aol.com)

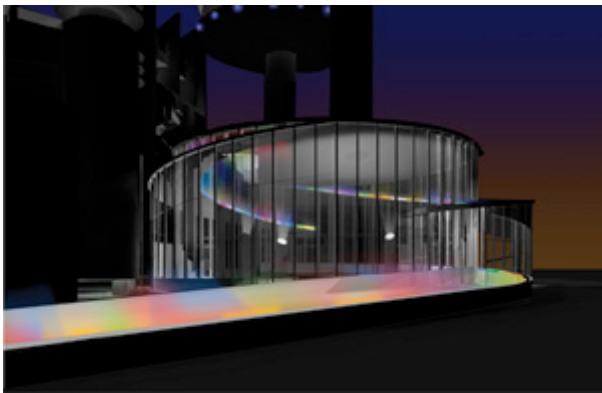
#### **Wausau Tile**

9001 Business Highway 51, Wausau, WI;  
715-359-3121  
[www.wausautile.com](http://www.wausautile.com)

#### **Vermont Structural Slate Co., Inc.**

3 Prospect St., Fair Haven, VT; 802-265-4933  
[www.vermontstructuralslate.com](http://www.vermontstructuralslate.com)

## Lighting



Queens Theater in the Park, Flushing Meadows, Queens,  
Caples Jefferson Architects

"Hervé Descottes of **L'Observatoire**, our collaborator on the Queens Theater in the Park, is terrific because he understands the architect's intent and enriches it."

**Sarah Caples, Caples Jefferson Architects**

## DESIGNERS

#### **Baldinger Architectural Lighting**

19-02 Steinway St., Astoria;  
[www.baldinger.com](http://www.baldinger.com)

#### **Cline Bettridge Bernstein Lighting Design**

30 West 22nd St., New York; 212-741-3280  
[www.cbbld.com](http://www.cbbld.com)

#### **Dusti S. Helms**

425 West 13th St., New York; 646-336-9931  
[dhelmsalc@msn.com](mailto:dhelmsalc@msn.com)

#### **Fisher Marantz Stone**

22 West 19th St., New York; 212-691-3020;  
[www.fmstp.com](http://www.fmstp.com)

#### **Focus Lighting**

255 West 101st St., New York; 212-865-1565  
[www.focuslighting.com](http://www.focuslighting.com)

#### **Leni Schwendinger Light Projects**

212-947-6282  
[www.lightprojectslltd.com](http://www.lightprojectslltd.com)

#### **L'Observatoire International**



Core Club, Midtown, SPaN

"**Aurora Lampworks** did an amazing job on two custom chandeliers at the Core Club. It was a real collaboration—we sat down with them and worked through all the questions: how we can build it, how we can make it reasonable, affordable, even how to change the lightbulb."

**J. G. Neukomm, SPaN Architects**

"We can communicate with **Focus Lighting** shorthand. I've always felt like lighting is the thing I spend the most amount of time thinking about. Focus does a good job integrating technology and spaces, designing a fluent interface."

**David Rockwell, Rockwell Group**



7 World Trade Center, Manhattan, Skidmore, Owings & Merrill

"**Cline Bettridge Bernstein** devised a great system for the lobby of 7 World Trade in which the light changes throughout the day on a timer, all the while meeting LEED requirements by using fluorescent bulbs."

**Ken Lewis, Skidmore, Owings & Merrill**

## Landscape Architects + Designers

**Lobsintz International**  
414 West 14th St., New York; 212-255-4463  
[www.lobshintz.com](http://www.lobshintz.com)

**Susan Brady Lighting Design**  
132 West 36th St., New York; 212-391-4230  
[www.sblidstudio.com](http://www.sblidstudio.com)

## SOURCES

**Aurora Lampworks**  
172 North 11th St., Brooklyn; 718-384-6039  
[www.auroralampworks.com](http://www.auroralampworks.com)

**Color Kinetics**  
10 Milk St., Boston, MA; 888-385-5742  
[www.colorkinetics.com](http://www.colorkinetics.com)

**Crenshaw Lighting**  
592 Paradise Lane, Floyd, VA; 540-745-3900  
[www.crenshawlighting.com](http://www.crenshawlighting.com)

**Edison Price Lighting**  
41-10 22nd St., Long Island City; 718-685-0700  
[www.epl.com](http://www.epl.com)

**Selux**  
5 Lumen Lane, Highland, NY; 800-735-8927  
[www.selux.com/usa](http://www.selux.com/usa)

**Standard Lighting**  
16 East 38th St., New York; 212-679-6388

**Balmori Associates**



Scape Studio, Microgarden, Sonoma, California

"**Elizabeth Kennedy** is a great collaborator. Her work is very project-specific, with a beautiful sense of materials, of solidity. It won't get kicked up or blown away, which is important for us since we work a lot in the public realm. It's nice to have someone who can connect architecture and landscape with a higher level of thought."

**Sarah Caples, Caples Jefferson Architects**

"I haven't worked with **Kate Orff** yet but I would really like to. Her working process is intensely analytical, from the plants to the architecture. She makes the landscape productive and multifaceted, which is satisfying from more points of view than the purely aesthetic."

**Craig Konyk, kOnyk architecture**

820 Greenwich St., New York; 212-431-9191  
[www.balmori.com](http://www.balmori.com)

**EKLA Elizabeth Kennedy  
Landscape Architects**

Brooklyn Navy Yard, Building 275, 63 Flushing Ave., Brooklyn; 718-596-8837  
[www.eklastudio.com](http://www.eklastudio.com)

**Kate Orff, SCAPE Studio**

180 Varick St., New York; 212-462-2628  
[www.kostudio.com](http://www.kostudio.com)

**Ken Smith**

79 Chambers St., New York; 212-791-3595

**Mathews Nielsen Landscape Architects**

184 Duane St., New York; 212-431-3609  
[www.mnlandscape.com](http://www.mnlandscape.com)

**Michael Van Valkenburgh Associates**

18 East 17th St., New York; 212-243-2506  
[www.mvvainc.com](http://www.mvvainc.com)

**Paula Hayes**

[www.paulahayes.com](http://www.paulahayes.com)

**Susan Welti Landscape Design**

304 Lafayette Ave., Brooklyn; 718-638-7547

**Thomas Balsley Associates**

31 West 27th St., New York; 212-684-9230  
[www.tbany.com](http://www.tbany.com)

## Plastics



Juan Valdez Cafe, Midtown, Hariri & Hariri Architects

"For the irregular walls in the Juan Valdez Cafe, we were looking for a shop that could do large-scale forms, assembled off-site and then brought in. **Display Workshop** usually manufactures artwork and 3-D signage, like cars hanging off of billboards. The work they

## Manufacturers

**3Form**

2300 South 2300 West, Salt Lake City, UT; 801-649-2500  
[www.3-form.com](http://www.3-form.com)

**BAM BAM Designs**

3020 Red Hat Lane, City of Industry, CA; [www.bambamdesigns.com](http://www.bambamdesigns.com)

**Beyond Concrete**

36 Industrial Drive, Keyport, NJ; [www.patternconcrete.com](http://www.patternconcrete.com)

**Canal Plastics Center**

345 Canal St., New York; 212-925-1666  
[www.canalplasticscenter.com](http://www.canalplasticscenter.com)

**Display Workshop**

225 Murray St., Bangor, PA; 800-332-6730  
[www.displayworkshop.com](http://www.displayworkshop.com)

**General Polymers**

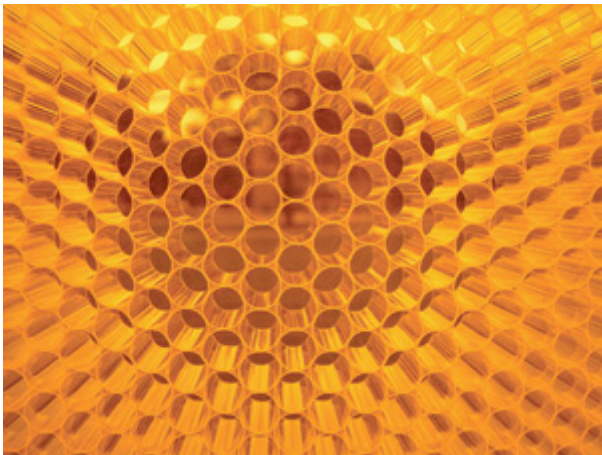
145 Caldwell Drive, Cincinnati, OH; 800-543-7694  
[www.generalpolymers.com](http://www.generalpolymers.com)

did for us was in between handmade sculpture and technologically precise millwork."

**Gisue Hariri, Hariri& Hariri Architects**



3Form Ecoresin and Wood Veneer Panel



Panelite IGU\TO4 Insulated Glass Unit With Honeycomb Core

## Consultants

### Mechanical Engineer

**Ambrosino DePinto & Schmieder, Consulting Engineers**

275 7th Ave., New York; 212-645-6060

[www.adsce.com](http://www.adsce.com)

### Jaros Baume + Bolles

80 Pine St., New York; 212-530-9300

[www.jbb.com](http://www.jbb.com)

### Plus Group Consulting Engineers

64 Fulton St., New York; 212-233-2700

"For a house we are doing in East Hampton, Imtiaz Mulla of the **Plus Group** introduced us to a lot of new technologies that are more efficient and humane, like solar power, wind power, geothermal systems, and an interesting air floor system. You can't rely on a contractor to do this."

**Martin Finio, Christoff:Finio Architecture**

### Structural Engineer

**Atelier TEN**

45 East 20th St., New York; 212-254-4500

### Panelite

315 West 39th St., New York; 212-947-8292

[www.e-panelite.com](http://www.e-panelite.com)

### Polygal

9405 D. Ducks Lane, Charlotte, NC;

800-537-0095

[www.polygal.com](http://www.polygal.com)

### Sources

Just Plastics

250 Dyckman St., New York; 212-569-8500

[www.justplastics.com](http://www.justplastics.com)

### Lightblocks

MB Wellington Studio, 141 Canal St., Nashua,

NH; 603-889-1115

[www.lightblocks.com](http://www.lightblocks.com)

### Robin Reigi Showroom

48 West 21st St.; 212-924-5558

[www.robin-reigi.com](http://www.robin-reigi.com)

### Rhino Linings

[www.rhino linings industrial.com/RL/industrial](http://www.rhino linings industrial.com/RL/industrial)

### Sensitile

1604 Clay Ave., Detroit, MI; 313-872-6314

[www.sensitile.com](http://www.sensitile.com)

[www.atelierten.com](http://www.atelierten.com)

**Buro Happold**

105 Chambers St., New York; 212-334-2025

[www.burohappold.com](http://www.burohappold.com)

**Desimone Consulting Engineers**

18 West 18th Street, New York; 212-532-2211

[www.de-simone.com](http://www.de-simone.com)

**Flack + Kurtz**

475 5th Ave., New York; 212-532-9600

[www.flackandkurtz.com](http://www.flackandkurtz.com)

**Gilsantz, Murray, Steficek**

129 West 27th St., New York; 212-254-0030

[www.gmsllp.com](http://www.gmsllp.com)

**Guy Nordenson & Associates Structural Engineers**

198 Broadway, New York; 212-766-9119

[www.nordenson.com](http://www.nordenson.com)

**Robert Silman Associates**

88 University Pl., New York; 212-620-7970

[www.rsapc.com](http://www.rsapc.com)

**Weidlinger Associates**

375 Hudson St., New York; 212-367-3000

[www.wai.com](http://www.wai.com)

**Expediter**

**Robert Bisaccia, Jr.**

171 Madison Ave., New York; 212-686-6277

**Jack Callahan, Agouti Construction Consulting**

588 Broadway, New York; 212-941-8514

**William Dailey Buiding and Zoning Consultant**

212-586-2114

**Mitra Mehr**

212-480-3990; [mitramehr@aol.com](mailto:mitramehr@aol.com)

**William Vitacco Associates**

291 Broadway, New York; 212-791-4578

[www.vitacco.com](http://www.vitacco.com)

"Will Dailey is erudite and knows tons about Manhattan, and probably more about theater code than any other expediter—he used to work in theater production. He also specializes in museum code. He helps us solve problems in a serious way while being sensitive to what we're trying to accomplish architecturally."

**Sarah Caples, Caples Jefferson Architects**

**Audio-visual**

**Acentech**

33 Moulton St., Cambridge, MA; 617-499-8000

[www.acentech.com](http://www.acentech.com)

**Baldinger Architectural Lighting**

19-02 Steinway St., Astoria;

[www.baldinger.com](http://www.baldinger.com)

**Sound Lounge**

149 5th Ave., New York;  
[www.soundlounge.com](http://www.soundlounge.com)

**Hifi House Group**

509 Old York Road, Jenkintown, PA;  
[www.hifihousegroup.com](http://www.hifihousegroup.com)

**Sensoryphile Audio Visual**

681-726-1920  
[www.sensoryphile.com](http://www.sensoryphile.com)

**TEK 7**

80 8th Ave. New York; 212-206-7814  
[www.tek7.com](http://www.tek7.com)

**Trans-Luxe**

10 Greene St., New York; 212-925-5863  
[www.trans-luxe.com](http://www.trans-luxe.com)

**VideoSonic Systems**

242 West 30th St., New York; 212-945-1860  
[www.videosonic.com](http://www.videosonic.com)

"The **VideoSonic** guys were real artists, they got the aesthetic value of what you were trying to do. They did great work in the pool and the steamrooms [at the Hotel QT] , where they used the dividing glass panels as speakers."

**Lindy Roy, ROY Design**

**Lawyers**

**Gordon Davis, LeBoeuf, Lam, Green and MacRae**

125 West 55th St., New York; 212-424-8000  
[www.llgm.com](http://www.llgm.com)

**Caryn Leland, Caryn Leland, Attorney**

316 West 63rd St., New York; 212-274-0707  
Ronny Livian, A.E.C.  
20 Vesey St., New York; 212-619-0200

**Ronny Livian, A.E.C.**

20 Vesey Street, New York, 212-619-0200

"**Ronny Livian** is the ex-commissioner of buildings, and is now in private practice. He's like a walking textbook of the arcane parts of code process."

**Daniel Goldner, Daniel Goldner Architects**

**Mark Seiden, Milber Makris Plousadis & Seiden**

3 Barker Ave., White Plains; 914-681-8700  
[www.milbermakris.com](http://www.milbermakris.com)

"**Mark Seiden** is great for contracts gone amok! He should be nicknamed 'The Pitbull.'"

**Gordon Kipping, G-tects**

**Photography**

**Adam Friedberg**



Jason Orton, Red Hook Series



Adam Friedberg, Habitat 67



Anthony Hamboussi, The Wanderer's Hospederia

917-449-5005

[www.adamfriedberg.com](http://www.adamfriedberg.com)

**Anthony Hamboussi**

[www.hamboussi.com](http://www.hamboussi.com)

**Dean Kaufman Photography**

917-749-8836

[www.deankaufman.com](http://www.deankaufman.com)

**ESTO**

222 Valley Pl., Mamaroneck, NY; 914-698-4060

[www.esto.com](http://www.esto.com)

**Floto + Warner**

208 West 29th St., New York; 212-947-2281

[www.flotowarner.com](http://www.flotowarner.com)

**Jason Orton**

+44(0)7941-536660 [orton67@yahoo.co.uk](mailto:orton67@yahoo.co.uk)

**Frank Oudeman**

646-298-8400

[www.frankoudeman.com](http://www.frankoudeman.com)

**J.C. Paz**

1425 Third Ave., New York; 212-933-4916

[www.icpaz.net](http://www.icpaz.net)

**Livia Corona**

917-400-4641

[www.liviacorona.com](http://www.liviacorona.com)

**Michael Moran**

10 West 18th St., New York; 212-334-4543

[www.moranstudio.com](http://www.moranstudio.com)

**Michael Piazza**

718-855-8954

[www.michaelpiazzaphotography.com](http://www.michaelpiazzaphotography.com)

**M. E. Smith**

718-369-6839 [mesmithphoto@earthlink.net](mailto:mesmithphoto@earthlink.net)

**Paul Warchol**

224 Centre St., New York; 212-431-3461

[www.warcholphotography.com](http://www.warcholphotography.com)

**Tom McWilliam**

310 West 99th St., New York; 212-864-0351

[www.tommcwilliam.com](http://www.tommcwilliam.com)

**Whitney Cox**

212-349-7894

Woodruff Brown

1280 Hopmeadow St., Simsbury, CT;

860-232-8977

[www.woodruff-brown.com](http://www.woodruff-brown.com)



M.E. Smith, Sanitation Dept., Incinerator, Red Hook



Frank Oudeman, Vaccaro Loft, Leeser Architects

## Other Services and Suppliers

### Custom Carpeting

#### V'Soske

155 East 56 St., New York; 212-688-1150

[www.vsoske.com](http://www.vsoske.com)

"You could come in with an egg shell from a robin and a raspberry and the people at V'Soske are so thoughtful and knowledgeable that they'll design a color based on that. They're truly reliable."

**Billie Tsien, Tod Williams Billie Tsien and Associates**

### Epoxy Floors

#### Ivan "The Captain" James

917-273-1674

"I don't know how he gets materials across the bridges and into Manhattan—they must be toxic with that kind of shine—but when **The Captain** is done, the finish is like ice."

**Jared Della Valle, Della Valle + Berheimer Design**

### Finishers

**David Anderson**

917-854-3380

"**Anderson** is a painter, but he does much more than faux finishes. He has an amazing eye. One time, after a bad pour [at the Folk Art Museum], he came in and repainted a ceiling to make the concrete look like it was poured beautifully. He's quite magical."

**Billie Tsien, Tod Williams Billie Tsien and Associates**

### Gilding

**Swayspace**

232 3rd St., Brooklyn; 718-596-3520

[www.swayspace.com](http://www.swayspace.com)

"In the model apartments for 55 Wall St., we wanted to have entry surrounds with glowing light behind, and to have letters hand-painted in black and gold. We found Willy Schwenzfeier of **Swayspace**, who does all of the gilded lettering in Grand Central Station. He's one of the few left who know how to do this."

**Adam Rolston, Tsao McKown Architects**

### Louvers

**Unicel Architectural**

Quebec, Canada; 450-670-6844

[www.visioncontrol.qc.ca/product.html](http://www.visioncontrol.qc.ca/product.html)

"**Unicel** has remarkably low prices for custom louver installations. We used them on the Spencertown House—the louvers are suspended on rods [and in this case, sandwiched between two panes of glass] and just beautiful. They are very finely detailed."

**Thomas Phifer, Thomas Phifer & Partners**

### Fiber Composite

**DSM Dyneema**

Geleen, The Netherlands; +31-46-476-7989

[www.dsm.com](http://www.dsm.com)

"I really want architects to know more about this material we are using called **Dyneema**, a lightweight polyethylene fiber that is stronger than steel. As a net, it is knotless and much more attractive than chain link. We are having it woven into a net for a floating swimming pool in the East River which we are designing for the Parks Department."

**Meta Brunzema, Meta Brunzema Architects**

### Stretched Ceiling

**Newmat Stretch Ceilings**

[www.newmat.com](http://www.newmat.com)

"I love the **Newmat** guys. They come and install their stretched ceilings for you. In the Lever House, they really came through for us. They dealt with the wiring, and adjusted the lights so they were just right. Also, the contractor somehow didn't put in the order in time, but the Newmat guys flew the ceiling materials over here directly. We've been very happy with them."

**James Slade, Slade Architecture**

**PRODUCED BY ANNE GUINEY, WITH JAFFER KOLB AND TERESA HERRMANN  
ALL IMAGES COURTESY CITED FIRMS.**

Copyright © 2005 The Architect's Newspaper, LLC | [about us](#) | [contact us](#) | [privacy policy](#)  
The Architect's Newspaper LLC, P.O. Box 937 • New York, New York 10013 • tel. 212-966-0630